

Recycling Pays - Annual Report highlights for Greater Manchester Waste Disposal Authority 2010/11

We are delighted to present the 2010/11 Annual Report highlights for the Authority. It has been another successful year of operation for the Recycling and Waste Management Contract (the Contract) with Viridor Laing (Greater Manchester) Limited (VLGM), largely due to close partnership working with VLGM, Waste Collection Authorities and working very closely with the residents of Greater Manchester.

'Our aim is Zero Waste' which means reducing as much as possible that we send to landfill. Our ambition is to divert over 90% of waste away from landfill, recycling at least 50% of it along the way.

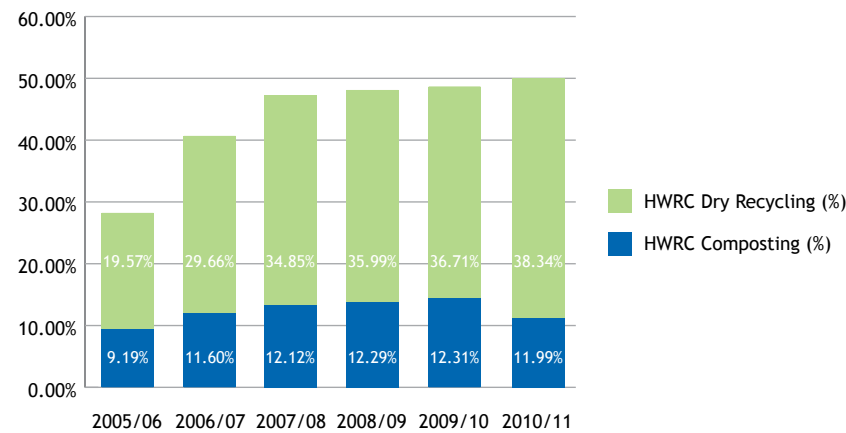
Partnership headline performance results are as follows:

- Increased the amount of waste diverted from landfill to 43%;
- Increased combined recycling and composting performance to 37%;
- Continued to invest £631m in creating world-class recycling, composting and waste management facilities with 31 out of 42 of these now having been completed. This includes the first thermophillic Mechanical Biological Treatment - Anaerobic - Digestion (MBT - AD) plant treating Local Authority collected waste in the country;
- Provided or sustained up to 5,000 jobs during the construction programme - a significant boost to the local economy; and
- 99.7% of residents either satisfied or very satisfied in a survey of our Household Waste Recycling Centres (HWRCs).

Household Waste Recycling Centre (HWRC) Improved Performance

Performance improvements have continued across the HWRC network, the combined recycling and composting rates have increased from 21.26% in 2004/05 to 50.33% in 2010/11. This increase has been achieved by significant investment in staffing, the development of new facilities, increased capacity for recyclables at HWRCs, increasing the range of recyclables, improving the level of meet and greet at the HWRCs and improved Health and Safety by segregating public vehicles from servicing vehicles.

Local Authority Recycling and Composting Performance 2010/11



All Waste Collection Authorities achieved recycling and composting rates over 28%. The target for 2015 is to achieve 50%.

Landfill Allowance Trading Scheme (LATS)

LATS targets are set to reduce the amount of Biodegradable Municipal Waste (BMW) sent to landfill each year. The Authority successfully achieved a surplus of 29,112 tonnes of LATS from their allocation of 493,765 for the fifth year in succession. This success has been down to the increased recycling by Greater Manchester residents.

Waste Management

Waste Management in Greater Manchester continued to benefit from the rollout of new collection schemes for paper and card, green waste and commingled, and enhanced diversion from landfill throughout 2010/11. Volumes have continued to fall from 1.48 million tonnes in 2004/05 to 1.14 million tonnes in 2010/11. In terms of the Climate Change agenda, this equates to a saving of 46,900 tonnes of CO2 equivalent. This decrease is a result of such things as improvement in education, enforcement and waste minimisation activities.

We launched our Climate Change Action Plan in November 2009. Our plan aims to look at ways that we can reduce our environmental impact as well as exploring how we can adapt to our changing climate. Our Recycling and Waste Management Contract means that even more recyclables can be extracted from the waste stream, with alternative uses found for waste rather than it going to landfill. To read our Climate Change Action plan, please visit: www.gmwda.gov.uk

National Recognition for the Contract

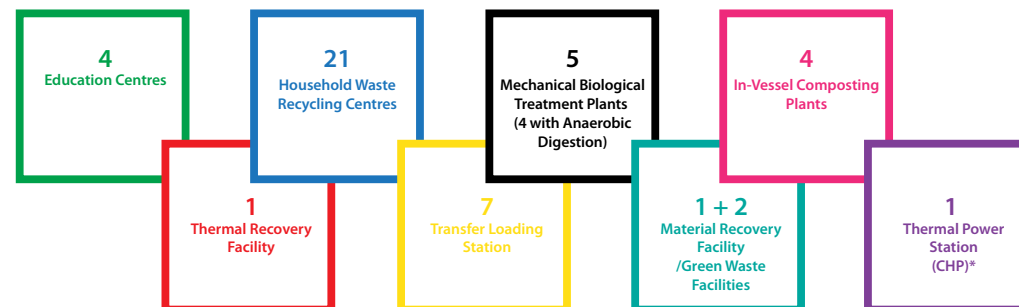
During the course of 2010/11 we have received the following awards:

- Local Government Chronicle Awards 2010 - Sustainable Environment - Winner
- Public Private Finance Awards - Best Waste Project - Winner
- Public Private Finance Awards - Judges Awards for Innovation - Winner
- Local Government Chronicle Awards 2010 for Innovation - Highly Commended



Contract Infrastructure

Completion of Greater Manchester facilities January 2012. Total capital cost of new construction £631 million. Capacity for 1.4 million tonnes per annum.



Communications

Changing the Way We View Waste

By recycling and composting we are doing our bit to protect the environment and save money. We have continued in 2010/11 to deliver behavioural change through a targeted communication and engagement programme.

Love Food Hate Waste (LFHW)

During the year the Authority completed the successful LFHW campaign, working in close partnership with Waste Collection Authorities and the Waste and Resources Action Programme (WRAP).

Key events during the campaign included:

- Hosting a pre-Christmas 2010 'Love Your Leftovers' cooking event whereby up to 1,000 Greater Manchester residents were invited to one of ten cooking events;
- Running a leftovers recipe competition to produce a 2011 LFHW Food Lovers' Calendar, with residents sending in their best leftovers recipes; and
- The culmination of the two year campaign in a 'Pass It On' event, held in March 2011, where local residents and community groups were provided with information, equipment and contacts to run their own LFHW events.

Over the two-year period of the campaign total waste arisings across Greater Manchester, have reduced from 1.29 million tonnes for 2008/09, prior to the start of the campaign, to 1.16 million tonnes for 2009/10, midway through the campaign, giving a reduction of 130,000 tonnes over the period of year one of the campaign. Over the period of year two of the campaign total waste arisings have reduced by a further 60,000 tonnes, to 1.1 million tonnes for 2010/11, at the end of the campaign.

LOVE
FOOD
hate waste

Spikey

Bolton comic, Dave Spikey, spearheaded our campaign "Stick it... in the right bin" to encourage residents on how they can boost their commingled recycling by putting the right items into their recycling containers. The campaign launched at the opening of our Materials Recovery Facility in October 2010 (The MRF receives, separates and prepares recyclable materials before sending them to be reprocessed into new materials). After the launch a residents' information pack was delivered to households in Greater Manchester encouraging them to recycle the right items.



Community Waste Fund

The Authority awarded a grant of £60,000 to community projects (£10,000 donation by the John Laing Charitable Trust). The Community Waste Fund got off to a flying start in September 2010 and is already making a difference to a number of crucial community waste projects right across Greater Manchester, which range from the 3Rs - Reduce, Re-use and Recycle. One project funded has developed a sustainable method to re-use unwanted bikes to provide affordable safe reconditioned bikes to increase access to affordable bikes for local communities and to enable volunteers to gain certified cycle maintenance training.



I Love Recycling Supplement

A 12-page I Love Recycling supplement was produced and featured in the Manchester Evening News (MEN). A double-page spread was also included in associated MEN weekly papers. The first edition in December 2010 had a winter/Christmas theme and provided information hints and tips about Christmas recycling and the March 2010 edition had a spring clean theme and provided information about composting and how to dispose of unwanted items.

Education

As part of our education programme we offer a wide variety of free, high quality, fun and interactive visits for classes or groups within the Greater Manchester area to our education centres in Bolton, Bury and Manchester, which are facilitated by a team of waste education officers.

We set ourselves a target of 160 education visits for 2010/11, this target was exceeded by 18, with all feedback received extremely encouraging. We also held nine open days for members of the general public to visit the sites and ask questions.

A resource pack online has been developed and allows teachers, community leaders and Waste Collection Authority officers to access a range of online resources to assist in delivering waste education. Please visit www.recycleforgreatermanchester.com for more information.



Summary of Accounts Information

The Statement of Accounts 2010/11 was approved by the Audit Committee at its meeting on the 28th September 2011 and an unqualified Audit Report was signed off by the Independent Auditor on 30th September 2011.

The net cost of services in 2010/11, after net transfers from reserves of £7.676m, was £108.084m which resulted in a surplus for the year of £1.473m on the adjusted Levy of £109.557m.

The level of balances on General Fund at 31st March 2011 was £12.391m.

The actual spend by the Authority on capital items during the year was £32.996m. However, this figure includes a sum of £31.813m which was a capital contribution to the Authority's Recycling and Waste Management Contract. Under the required 'On Balance Sheet' treatment of PFI contracts, this capital contribution is treated as a prepayment of contract charges and is replaced in the additions to property, plant and equipment (fixed assets) by assets constructed within the Contract that were completed during the year. PFI assets costing £104.671m were included in additions for the 2010/11.

Challenges Facing the Authority in 2011/12

2010/11 has been a very busy year of considerable achievement, continuing a trend of improved performance. The challenge for 2011/12 is to continue to meet our targets, continue promoting our key messages through awareness and behavioural change campaigns, continue working towards our vision of achieving, 'Our Aim is Zero Waste' and maximise the value of the Contract.

For further information please visit www.gmwda.gov.uk